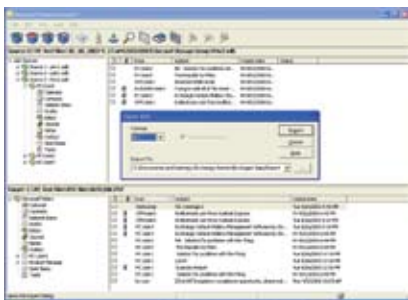


Exchange search & restoration simplified

Ontrack® PowerControls™ is a simple, yet powerful tool for searching, restoring, exporting, and analysing mailbox items directly from Microsoft® Exchange Server backups, EDB files and Information Store files, or your live Exchange server.

Think about the number of e-mail messages and mailboxes stored in your organisation's Exchange server backups. If you needed to find a single e-mail message or mailbox in your backups, how long would it take?

If the very thought of needing to locate and restore messages or mailboxes from your Exchange server backups makes you cringe, Ontrack PowerControls is the perfect solution.



The proliferation of electronic data has resulted in an increase of stored data volume and requests to locate and restore specific messages or mailboxes. Ontrack PowerControls is

an email management tool that helps IT teams efficiently search, recover and restore messages, mailboxes, attachments and other Microsoft® Office Outlook® items from any previous full backup. Ontrack PowerControls will reduce the time and resources necessary to respond to a request for messages and attachments. Alternative methods of granular Exchange item restoration, such as using single mailbox or "brick-level" backups, are typically very slow and often expensive due to the additional storage space required. Another alternative – restoring a full backup to a recovery server – can take many hours to complete and requires a hardware purchase. With these alternatives, searching through the backup to find the items you need is still necessary.



Create IT efficiencies

Simply put, Ontrack PowerControls dramatically cuts the time and expense normally associated with Exchange item restoration.

- Eliminate the need for brick-level backups or Exchange recovery servers, and perform granular message and mailbox recovery with ease
- Recover, restore and search Exchange 2010 archived and recoverable items with the same convenience as active mail items
- Restore items directly to your production Exchange server or any PST file directly from your server backups or un-mounted EDB's
- Simplify email management tasks such as Exchange server migration and mailbox creation

Reduce search time

Not only is Ontrack PowerControls an invaluable recovery tool, but a powerful searching tool as well. Locating messages, mailboxes and attachments that meet precise search criteria can be achieved much faster with Ontrack PowerControls. Use keywords and other criteria to search across multiple databases simultaneously, locate the items you need and export them back to another location with a simple drag and drop. Ontrack PowerControls installs on any Windows workstation, and requires no changes to your existing backup procedures or architecture.

How do you benefit from Ontrack PowerControls?

Minimise the amount of storage space and the cost required to store and archive your backups. Ontrack PowerControls eliminates the need to backup mailboxes individually, thereby completely eliminating the backup space, cost, and time associated with performing brick-level backups.

Greatly reduce the time required to restore an individual mailbox. Ontrack PowerControls restores mail items from a previous full backup directly into the production Exchange Server or directly into a new or existing PST file, thereby eliminating the extra steps required to separately import mail back into Exchange or Outlook.

Virtually eliminate the time it takes to backup the information store. Ontrack PowerControls completely eliminates the need to backup mailboxes individually. In other words, most companies today will perform a full Exchange backup as normal and then run a second process to backup "Very Important Mailboxes (VIM)" individually. Ontrack PowerControls eliminates this second process completely.

Cut the time it takes to backup an individual mailbox to ZERO. Ontrack PowerControls takes zero time to do this because we've completely eliminated the need for this step!

Minimise the time it takes to locate all emails matching specific criteria – keywords, specific user(s), subject, date.

Ontrack PowerControls has an Advanced Find feature that can search across all mailboxes in an archive EDB file, rather than searching one mailbox at a time or bringing an old backup back online for analysis.

Ontrack PowerControls system requirements

To connect and use Ontrack PowerControls software, you need the following hardware and software:

- Windows® 2000 Server, Windows 2000 Professional, Windows XP Professional, Windows 2003 Server Windows Vista Business, Windows Vista Ultimate, or Windows Vista Enterprise
- Microsoft® Outlook 2000 or later (requirement dependant on Exchange Server version and interaction)
- Microsoft .NET 2.0 framework
- Intel® Pentium® -class processor
- Required RAM: 1024 MB Minimum
- 200 MB of free hard disk space for installation (more disk space will be needed for processing log files when opening and an EDB file)
- Monitor with 800x600 or higher screen resolution

Note: Ontrack PowerControls supports Microsoft Exchange Server 5.5, Exchange Server 2000, Exchange Server 2003, Exchange Server 2007 and Exchange Server 2010.

To use Ontrack PowerControls you will need access to a complete EDB file. To quickly restore a previous EDB from tape, we offer the recommendations below.

Backup Product	Version	Recommendation
Microsoft® NT Backup	All versions	(1) or (3)
Symantec Backup Exec™	All versions	(1) or (3)
VERITAS NetBackup™	Exchange 5.5	(1) or (3)
VERITAS NetBackup™	Exchange 2000 or 2003	(1) or (3)
EMC® NetWorker®	All versions	(1) or (3)
CA® ARCserve®	Agent for Exchange with Open File Agent	(1) or (3)
CA® ARCserve®	Agent for Exchange	(1) or (3)
IBM® Tivoli® Storage Manager	All versions	(1) or (3)
Hewlett-Packard OpenView® Storage Data Protector	All versions	(1) or (3)
CommVault® Galaxy™	All versions	(1) or (3)
UltraBac	All versions	(1) or (3)

(1) Use Ontrack PowerControls Extract Wizard to restore to an alternate location that is not an Exchange Server, then use Ontrack PowerControls to read the EDB. For details regarding the supported versions of the Extract Wizard Agent, please go to:

www.ontrackpowercontrols.co.uk/resources/add-ons

- (2) Use Backup Software to restore to an alternate location that is not an Exchange Server, then use Ontrack PowerControls to read the EDB.
- (3) Use Backup Software to restore to a Recovery Server (duplicate Exchange Server), then use Ontrack PowerControls to read the EDB.
- (4) If Backup Software incorporates an Exchange Server volume mirroring technology, then use Ontrack PowerControls to read the offline snapshot of the EDB.

Kroll Ontrack UK
The Pavilions
1 Weston Road, Kiln Lane
Epsom, Surrey, KT17 1JG

+44 (0)1372 736 632
www.ontrackdatarecovery.co.uk

Kroll Ontrack Ireland
Marsh House
25-28 Adelaide Road
Dublin 2, Ireland

1800 930 183
www.ontrackdatarecovery.ie